



Welcome to the  
**17<sup>th</sup> Advisory Committee Meeting**

4-6 October 2010

UN Campus in Bonn, Germany



## **Bonn: the city of Beethoven on the Rhine**

Formerly the capital of West Germany, Bonn is a place of many attractions consisting of three once independent towns and numerous villages each with its own character and surrounded by beautiful countryside. Travellers come here to visit the city where Ludwig van Beethoven was born and where Robert Schumann was laid to rest.

The historic centre is compact and a pedestrian zone and therefore best explored on foot. The river front of the city centre has been completely transformed after World War II with the construction of the modernist Opera House and a new road to the Rhine bridge, whereas most of the old town centre has preserved its medieval street plan. This is the main shopping area with a lively, daily fruit and vegetable market in the Markt (market square).

A short distance from the Markt is the Bonngasse, Beethoven's home and a museum exhibiting memorabilia and manuscripts from the great musician's life.

The Baroque Altes Rathaus (Old City Hall) stands on the southeastern end of the market square. Next to it is Em Höttche, one of Bonn's most traditional restaurants, dating back to 1389.

The two main shopping streets are Sternstraße and Remigiusstraße, where you'll find affordable fashion and handicrafts, and a vibrant night life.

These streets lead to the second main square, the Münsterplatz, which is dominated by the Romanesque Münster basilica, Bonn's premier landmark.

Other sights include the Poppelsdorf Palace (with botanical garden) and the Bonn University (formerly the palace of the Prince-Elector of Cologne).

## Hotels

Block reservations have been made from 3 to 7 October 2010 in the following hotels:

### Hotel zum Löwen

Von Groote Platz 1

53173 Bonn - Bad Godesberg

Phone: +49 228 528890

Fax: +49 228 5288977

[www.hotel-zum-loewen-bonn.de](http://www.hotel-zum-loewen-bonn.de)

e-mail: [empfang@hotel-zum-loewen-bonn.de](mailto:empfang@hotel-zum-loewen-bonn.de)

***ASCOBANS Rate: € 77.50 incl. breakfast.***

The hotel is situated in the centre of Bad Godesberg between the pedestrian area and the old residential district. Bus and tram stations for travel to the UN premises are very close.

### Hotel zum Adler

Koblenzer Strasse 60

53173 Bonn

Tel: + 49 228-7637 17-0

Fax: + 49 228-763717-99

[www.hotel-zum-adler.de](http://www.hotel-zum-adler.de)

e-mail: [info@hotel-zum-adler.de](mailto:info@hotel-zum-adler.de)

***Ascobans Rate: € 83 incl. breakfast***

The hotel is located in the city centre of Bonn Bad-Godesberg. You can reach the UN premises by underground or bus within a short walking distance.

### Hotel Continental

Am Hauptbahnhof 4

53111 Bonn

Phone: +49 228 3918990

Fax: +49 228 39189999

<http://www.continental-bonn.de>

e-mail: [info@continental-bonn.de](mailto:info@continental-bonn.de)

***ASCOBANS Rate: € 90 incl. breakfast.***

Hotel Continental is situated in the centre of Bonn, next to the main railway station.

**Maritim Hotel Bonn**

Goesberger Allee

53175 Bonn

Tel: +49 228 8108-0

Fax: +49 228 8108-811

[www.maritim.de](http://www.maritim.de)

e-mail: [info.bon@maritim.de](mailto:info.bon@maritim.de)

***ASCOBANS Rate: € 135 incl. breakfast***

The hotel is situated close to the Museumsmeile and the UN premises and can be accessed with tube line no 63 or no 66 from Hauptbahnhof.

**max HOSTEL Bonn**

Maxstrasse 7

53111 Bonn

Phone: +49 (0)228 82345780

[www.max-hostel.de](http://www.max-hostel.de)

Mail: [info@max-hostel.de](mailto:info@max-hostel.de)

***Ascobans Rate: € 31 per single bed room***

***€ 48 per single room with double bed***

Max HOSTEL is situated near the Stadthaus and offers basic comfort. The nearest tube station is Stadthaus with direct access to UN premises by taking tube no 66 direction Bad Godesberg – or tube no 63 with exchange at Bonn Hauptbahnhof to no 66.

**Delegates are requested to make their own reservations.** Please mention that you are attending the ASCOBANS Meeting when booking your room to enjoy the special rate.

Please also note that the block booking and special rates will only be maintained **until**

**01 August 2010**

Delegates booking their accommodation later will have to make independent arrangements. Please note the conditions that apply for cancellation and late arrivals, as indicated on the hotels' websites.

## Transport from Köln/Bonn Airport to the UN Campus

### **From Cologne/Bonn airport:**

There is bus service from the **airport Cologne/Bonn** (outside Terminal 1) to the city of Bonn.

Take the bus no. SB60 at the airport and step off at the final destination "Hauptbahnhof Bonn" (around 30 minutes travel time).

### **From Frankfurt airport:**

You can take the ICE train from **Frankfurt airport**, to Siegburg/Bonn, then take tram no. 66 to Bonn main station (Hauptbahnhof). Alternatively, go to Cologne main station, where you will then need to change to a regional train to Bonn main station (Hauptbahnhof).

### **From Düsseldorf airport:**

From **Düsseldorf Airport** to Bonn there are direct trains, which run hourly and have a travel time of about 66 minutes; a ticket to Bonn main station (Hauptbahnhof) costs about 18.00 €.

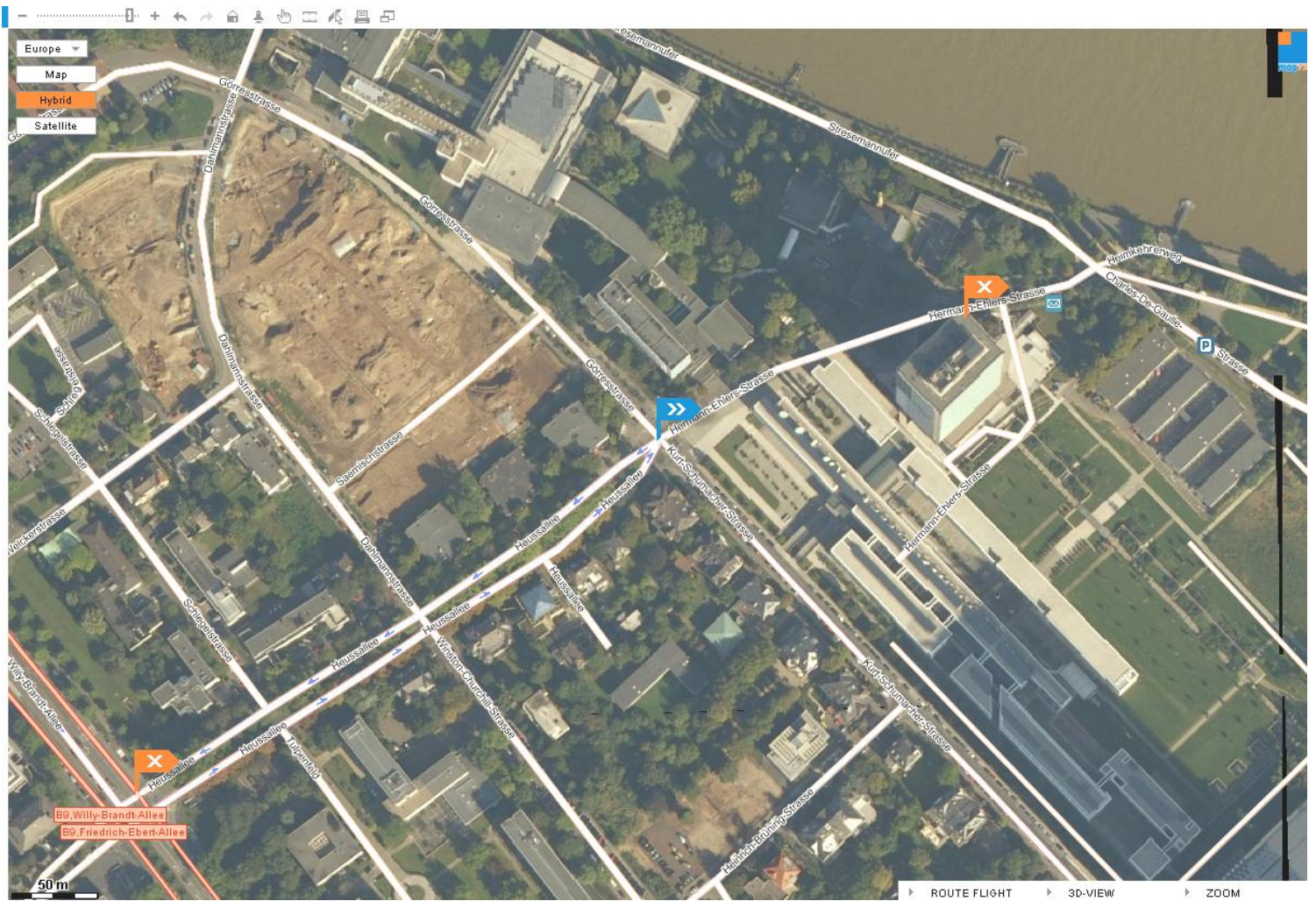
### **Within Bonn to the UN Campus**

Take the tram/metro no. 16, 63 or 66 to "Heussallee/Museumsmeile" (timetables are available [here](#)). The tram/metro is marked with blue U signs.

Upon arrival at Heussallee, exit the station and walk down Heussallee to Hermann-Ehlers-Straße (toward the Rhine River) for about 5 minutes till you come to the UN Campus (a tall multiple-storey building). The entrance is located about 100 meters down the road.

Alternatively, you can take bus no. 610 or 611 to "Deutsche Welle" (timetables are available [here](#)). Upon arrival, walk down Hermann-Ehlers-Straße towards the Rhine river. You will find the UN Campus on your right.

For directions to your hotel, please consult the hotel's website (details above).



Please note that the orange flag on the left marks the underground station “Heussallee”

The blue flag marks the bus station “Deutsche Welle”

The orange flag on the right marks the UN building “Langer Eugen”

### **Inside the UN Campus “Langer Eugen”**

After giving your passport/ID to the security at the entrance you will find a registration desk inside. All rooms will be signposted.

The meeting room has the number 1916 and can be found on the 19<sup>th</sup> floor.

For the lunch breaks you will need to take the elevator up to the 29<sup>th</sup> floor.

For other lunch options, we can suggest the canteen of Deutsche Welle or the Post Tower, where you will need a pin-card that can be purchased at the entrance. There is a small kiosk by the Rhine River. Other options would be the Italian restaurant Forissimo on Kurt-Schumacher-Strasse or the Rheinaue Restaurant in the park just behind Post Tower. Please ask the Secretariat for directions.

### **Security requirements for the UN Campus**

Please note the standard security requirements that you need to be familiar with when you visit us here at the UN Campus in Bonn:

1. No big luggage allowed inside the building; maximum size is a backpack or a briefcase or laptop bag (If you have big luggage you will have an option to leave it with security and it will be stored until leaving the premises)
2. No friends or family members unless they are participants
3. Participants should not use the facilities of other agencies on the conference floors
4. Smoking is only allowed at the ground floor, smoking area; no smoking in the toilette, please
5. All participants will be checked against their passports/national ID cards
6. The participants should not move throughout the building unattended for safety reasons unless really necessary; in that case please inform the Security
7. Please report any loss of conference ID badge to security for corrective action regarding the access
8. Participants should not leave their personal items of value unattended
9. Participants should appear at the guard house half an hour earlier in order to ensure that there is enough time to deal with the last minute changes if there are any
10. No photos should be taken inside the building

## Useful Numbers

Country dialling code: +49

City dialling code: (0)228

Tourist Information: 773924

Railway Station Bonn: 19419

Airport Cologne/Bonn: 02203 / 404001/2

Emergency: 112

Police: 110

Fire: 112

Doctors: 364567 / 19257

ASCOBANS Secretariat: 815 2416